

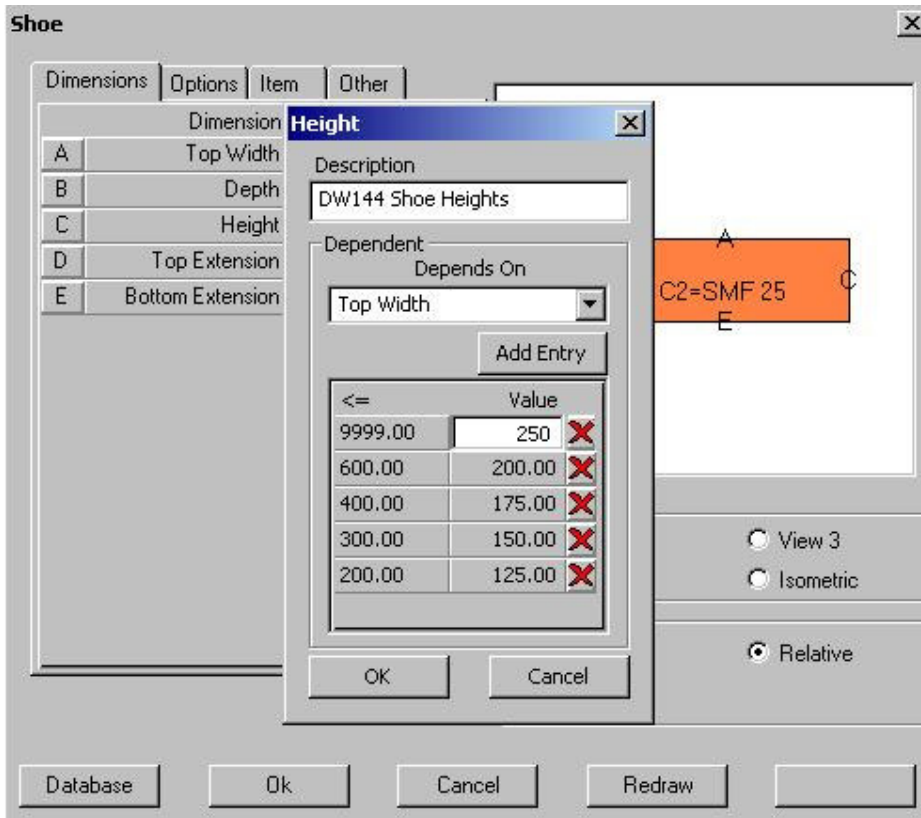
## Creating Dependencies

On certain items some dimensions are dependent on the values of other dimensions. An example would be a shoe branch to DW144 (or whatever specification you are working to) where the height of the shoe varies dependent on the top width.

There is a feature available to enable you to set these dependencies so that you don't have to change the value when inserting an item if it differs from the default value set.

Let us use the shoe branch as an example:

Right click on the shoe branch button and select edit. In the dialogue box which appears click on the reference next to the value you wish to set as dependent – in this case the letter 'C' next to 'Height'. A second dialogue box will appear as shown below.



## Inserting Your Data

In the first box you can enter a description. For example we've used the text 'DW144 Shoe Heights' above but you can enter whatever you wish, although we'd recommend that you don't make it too long. This may be handy when you print out reports, as it will flag up what values have been used. Whatever you set as the description will replace that previously shown when you OK your inputs. If you leave this box blank the description 'Height' will remain.

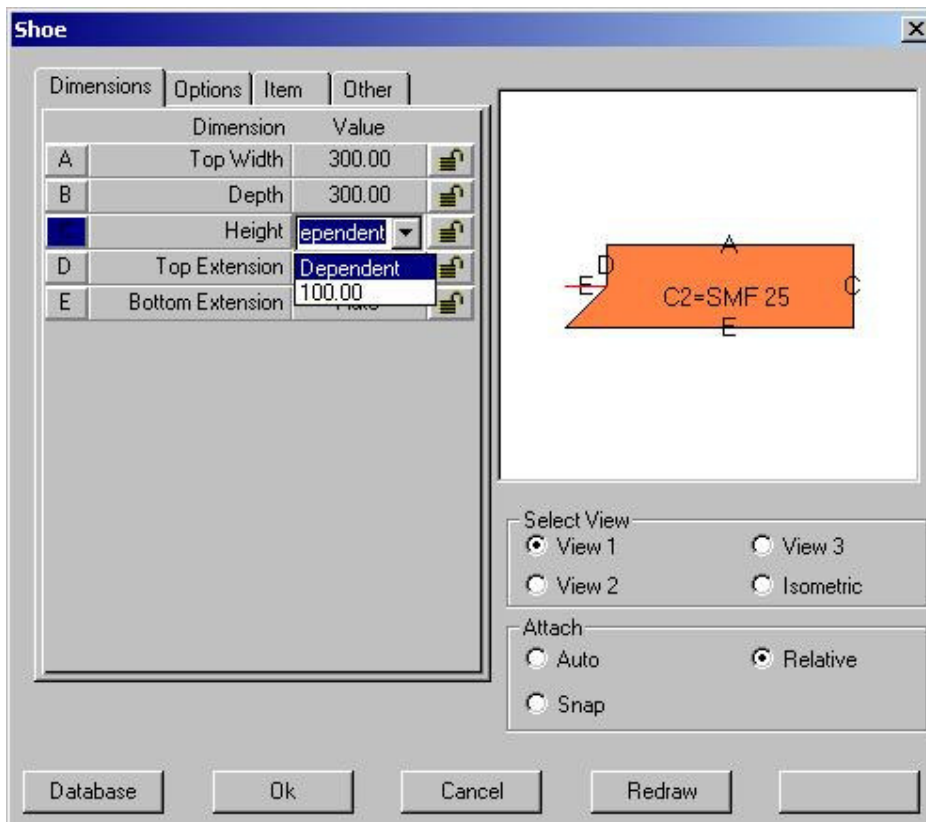
The second box contains a pull-down menu from which you select the value against which the height is dependent. Here we've selected 'Top Width'.

Now you must click on the 'Add Entry' button to start adding your criteria.

For each entry you add you should enter a value in the left hand column – this will be read as 'less than or equal to' that value.

Now in the right hand column enter the values for the heights. Note that the height in the pattern is the overall figure including the extensions. The heights given in your specification may exclude these extensions so you will need to adjust the values accordingly.

Once you have OK'd these entries you should see that the value box for the Height now has a pull-down list. By selecting the option 'Dependent' you will assign values to the Height in accordance with those you have just set.



On the image shown above the description field was left blank and so the previous description 'Height' remained.

You can use this feature on any item where you want to set one or more values to be dependent on others.

**Note:** This feature is available in Release version 2.29.045 and later.