

## Item Pattern Information

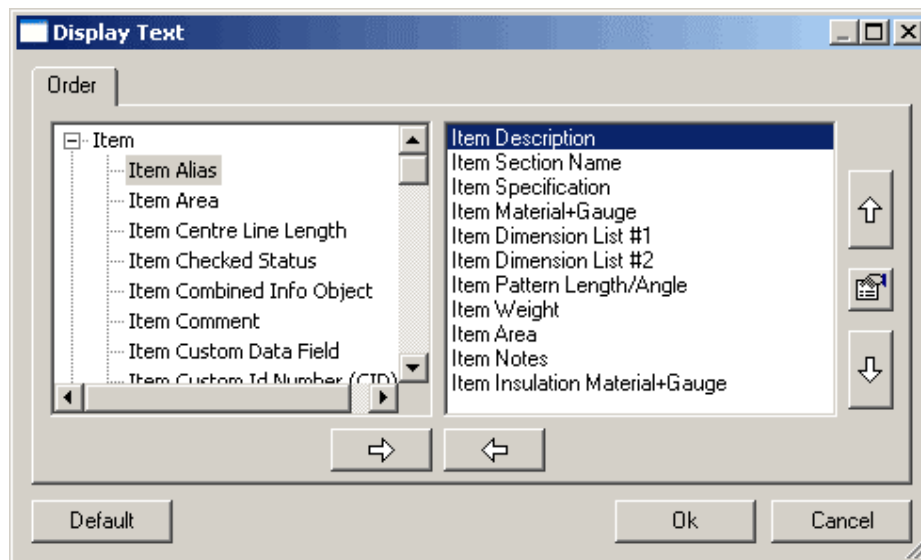
**Item Information** can be used to display information in addition to that which is available from using the Annotation commands.

Item Information text uses AutoCAD text options, it is none associative, and consequently will not change if the Item is modified in any way.

### Setting up the additional Item Information

**Right click** in Model Space and select **CAD-Duct Solids BSS > List Setup** to prompt the following dialogue.

The left side of the dialogue contains a list of all the available additional Item information options. The right side lists the currently selected Item information options in the order they will display from top to bottom.



To move objects from the left column to the right column so they can be used or vice versa is very simple.

Click on the object to be moved so it highlights.

Click the respective arrow button at the bottom of the two lists. Clicking the left arrow button will move objects highlighted in the left column to the right so they can be used. The right arrow button will move objects highlighted in the right column back to the left to remove them.

The two vertical arrow buttons at the right of the dialogue will change the order in which the objects are used / displayed.

Click the object in the right column that is to be moved

Click either the arrow button pointing up or the arrow button pointing down to move the selected object

When the modifications are complete click OK

### Displaying Item Information

Once the Item Information is configured it can be used on any Item in the drawing.

**Left click** on the Item for which the information is to be displayed

With the item highlighted **right click** on it and select **Draw Info** from the displayed menu. The information should now be displayed.

As mentioned earlier the **Item Information is not associative** so it can be moved independently of the Item it was displayed for.

Selecting the Item Information text should display the grip by which it can be moved.