

## Renumber

As each Item is entered into a drawing it can be assigned an **Item Number**, which is often used to identify CAD-Duct Items alongside their real world counterparts. However it may not be possible or desirable to draw in the order that the parts are to be numbered.

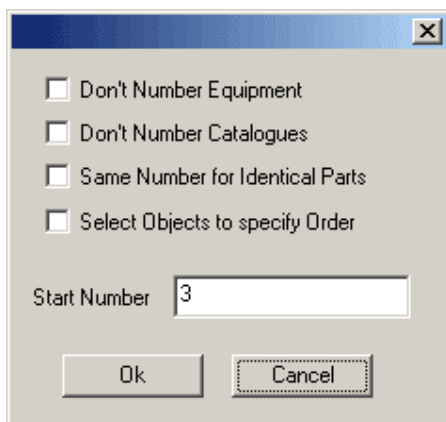
The **Renumber** command allows the user to set sequential numbers for **Items that are joined**. It also allows options to assign the same number to identical Items and to allow, or disallow, certain items from receiving numbers (useful if you do not want to number bought out Items).

### Procedure

From the toolbar **Select**  **Numbers** or at the **command line** enter **Renumber**

**Select** the items be renumbered - this can be done using any of AutoCAD's normal selection commands.

**Right Click > CAD-Duct Solids BSS > Re-Number** which will display the Re-Number dialogue below



The following options are available:

**Don't Renumber Equipment** - Determines whether Items that have their Bought Out status set are numbered. For information on checking the Status see the note below

**Don't Number Catalogues** - Determines whether Items that have their Catalogue status checked are numbered. For information on checking the Status see the note below

**Same Number for Identical Parts** - If Items are identical whether they receive the same number or separate numbers

**Select Objects to specify Order** - This option allows the user to select Items in the order that the numbers are to be applied. This is useful if the numbers are not consecutive.

**Start Number** - Sets the first number that is assigned. The entered value can also be a letter or combination of numbers and letters

**Note:**

*To check if the Items Status is Certified:*

Left Click the Item, once highlighted, Right Click and Select > CadDuct BSS Properties.

Select the General Tab, towards the bottom of the Dialogue box there will be a check box for Catalogue, if this is checked you know the Item is a Catalogue Item.

*To check if the Items Status is Bought Out:*

Double Left Click the Item to prompt the Edit Item Dialogue box

Select the Item Tab, midway down there will be a check box for Bought Out, if this is checked you know the Item is a Bought Out Item.

**Check** the options you require and then **Click OK**

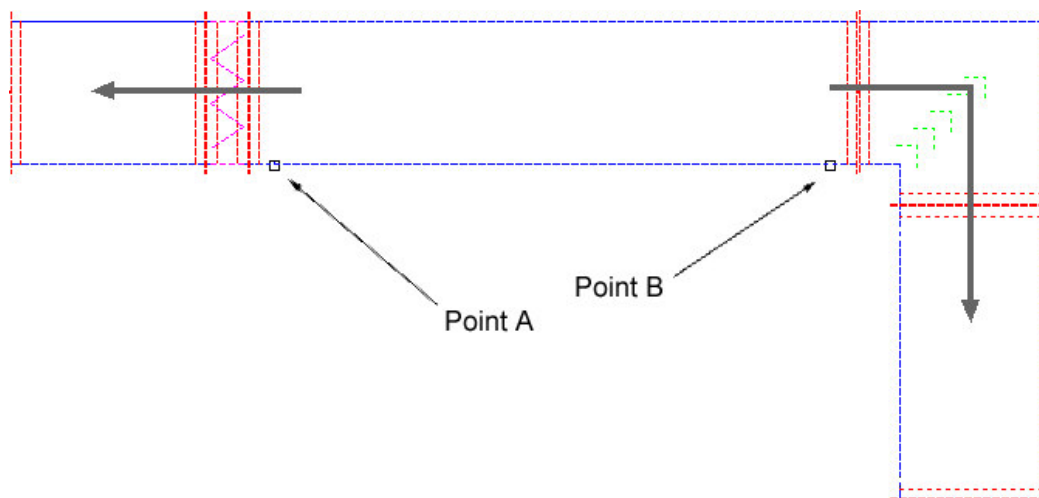
The **command line** will prompt one of the following <<**Select Start Duct**>> or <<**Select Items in the Order required**>>, depending on which Re-Number options have been selected

## Examples

**Default - Select Order is not selected:**

If **Select Objects to specify Order** is not selected the **command line** prompt should read <<**Select Start Duct**>>.

Before selecting the duct there are two options: Selecting point A will result in the selection of all the following Items that are connected in the direction of the end selected. Point B will result in the selection of all the following Items that are connected in the direction of the end selected.



**Right Click** to Apply the Item Numbers to the selected Items

**Select Order option:**

If selected the **command line** will prompt the following <<**Select Items in the Order required**>>.

**Click** on each Item in the order that the Item Numbers are to be applied. It is not important which end of the Item is selected.

**Right Click** to execute the command.