

Backing Up & Restoring CAD-Duct

Description

The **MAPBack** program will allow you to **backup** the entire CAD-Duct Solids system. This is a task that should be undertaken on a **regular basis** to save any changes made to CAD-Duct Solids.

It can also be used to install a **complete backup** of your CAD-Duct program and database onto a **new computer**. However it is recommended that you contact your Software supplier before attempting any restoration.

Usage

Step 1 Backing up an existing installation

Click **Start - Programs - CAD-Duct Solids - Back-up Utility**

Alternatively run from within your CAD-Duct Solids Installation Folder:

Double Click **MapBack.exe**.

Click **Next**.

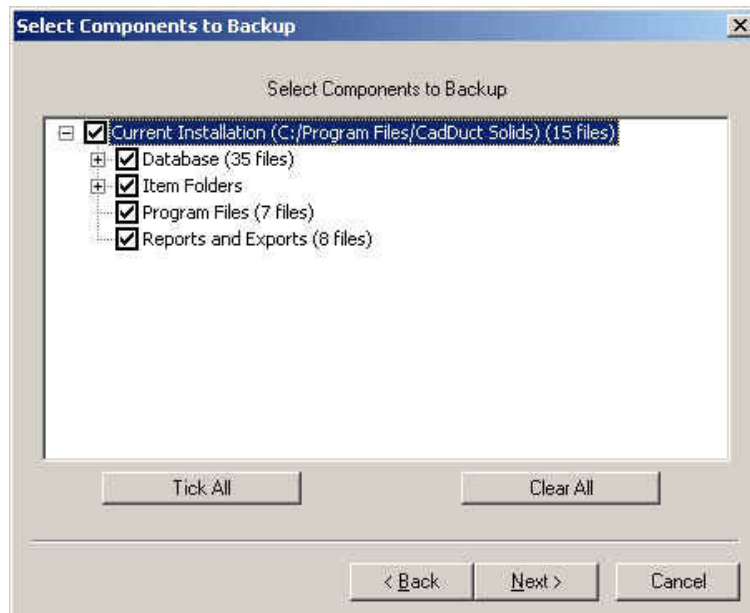
Click **Select Installed Components**.

Click **Next**.

The **MAP Backup** program will now search and find any CAD-Duct installations within the folder it has been run from.

Once the search is complete, select the folders to back up from the list displayed within the **Select Components to Backup** box.

Click **Next**.



Select **Backup to Disk**.

Enter an appropriate **file name**, i.e. ibackup.zip.

Click **Finish**.

MapBackup will now save the file to the specified location.

Step 2 Opening an existing backup

Open **MAPBack**.

Select **Start - Programs - CAD-Duct Solids - Back-up Utility**

Alternatively run from within your CAD-Duct Solids Installation Folder:

Double Click **MapBack.exe**.

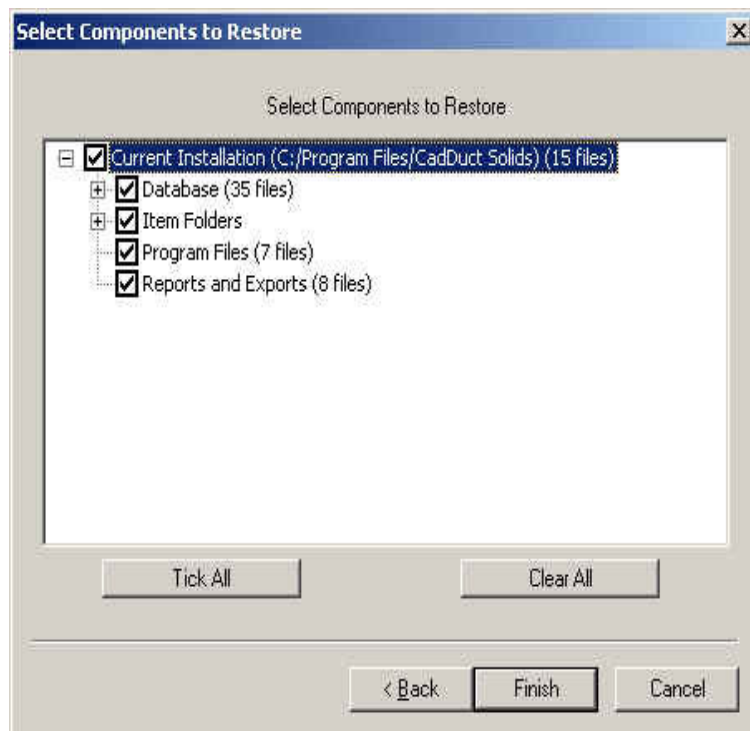
Click **Restore a Previous Backup**.

Click **Next**.

Select **Archive To Restore**, i.e., ibackup.zip.

Click **Next**, or browse to a different location.

Select the **relevant folders to restore**.



Click **Finish**.

The **MAP Backup** will now **restore** the files into the location specified.