

Setting Up Layer Names

The **Layering Tab** is the most important because if this isn't set up correctly then other information from within the **Setup Services** folder won't be shown on the drawing.

Items in the right hand panel of the **Layering Tab** will be shown in the name of the layer, whereas items in the left hand panel won't be shown.

The **Setup Services** command is accessed by one of the following methods:

From the toolbar **Select** 

At the **command line** enter **servicedb**

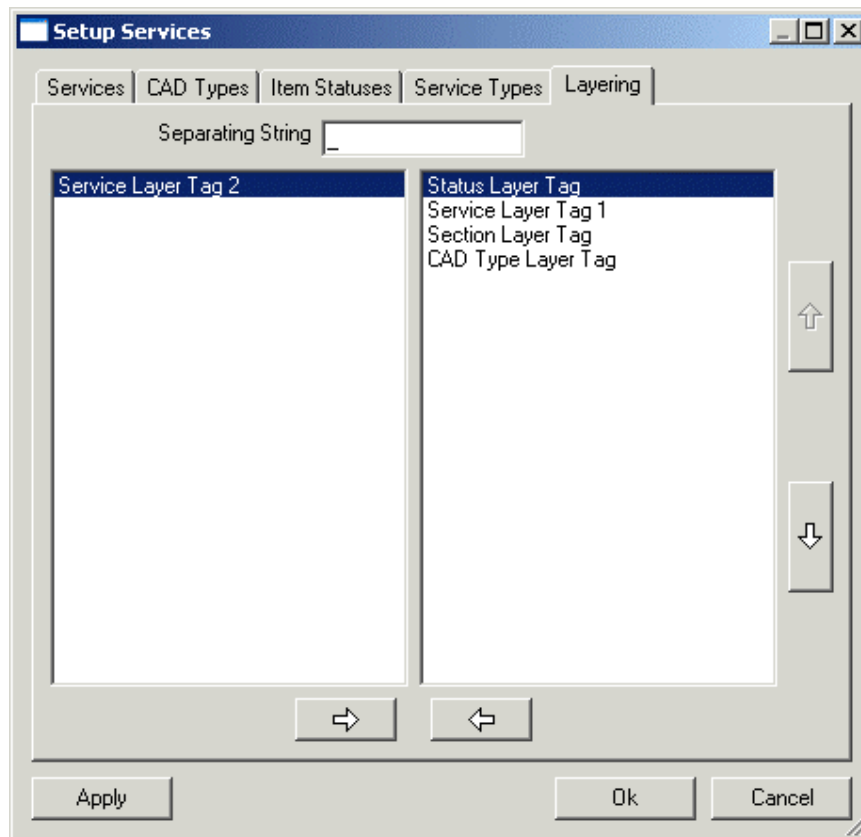
Shift Right Click menu **CadDuct Solids BSS > Edit Services Database**

Procedure

Choosing Layer Tags

Open the **Edit Services Database** box.

Select the tab named **Layering**.



Separating String

This allows for different types of separation between the layer section names e.g. Duct Supply_3D / Duct Supply-3D / Duct Supply+3D

Add or Remove Different Layer Tags to the Layer Name

Click to highlight the Layer Tag required.

Click on either the right facing arrow to add it to the layers properties.

Or click on the left facing arrow to remove a layer from the properties.

Sorting the Order of the Layer Tags

Click to highlight the layer tag required.

Click on either the up or down arrow to sort the layer tags into the order that you require.