

Purging the Database

When a drawing with CAD-Duct solid items is opened, CAD-Duct compares the Database settings of that drawing or Item to the settings in the default database. If differences are found they are added to the default database. To differentiate between the **original Database** and anything added from an external source the added contents are appended with the name of the Drawing or Item from which it was added and shown in brackets.

Example:

An Item Connector table may include entries such as

DM25 {Drawing 12a.dwg}

Or

DM25 {Square Bend.itm}

The name displayed in brackets is the Drawing or Item from which the entry was taken. While these entries do not affect the running of the product they can increase the amount of data the operator has to go through when creating a drawing. The user can **Purge** the entries from the database or choose to **make them permanent**.

Procedure

The **Sectional View** command is accessed by one of the following methods:

From the toolbar **Select** 

At the **command line** enter **purgedb**

Shift Right Click menu **CadDuct Solids BSS > Purge Database**

Purging the added information

Click the Purge Icon 

A warning will be displayed recommending that the Database is backed up before proceeding.

If a current backup has been made click OK.

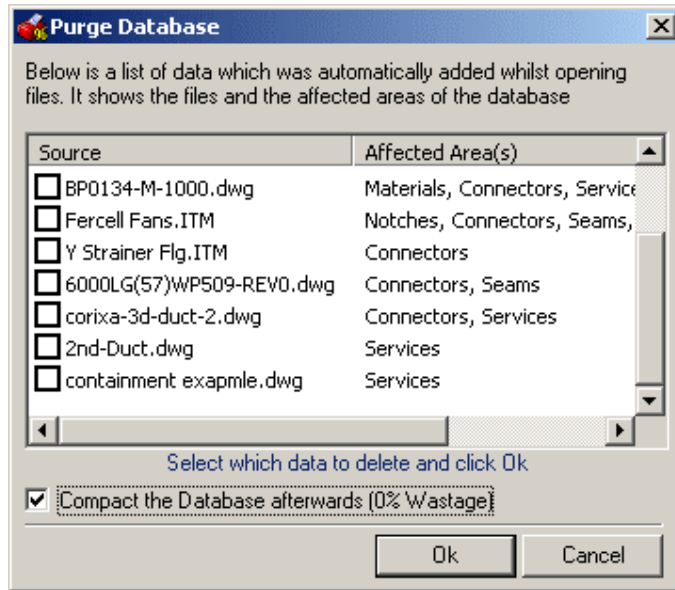
Note: Map Backup utility can be used to create a backup of the CAD-Duct database.

The Purge dialogue should be displayed.

This dialogue displays all the entries in the default database that have been added from exterior sources.

Select all the entries to be deleted and click OK.

A dialogue should be displayed confirming the deletion of the selected entries.




It is important to remember that using this method will remove **ALL** bracketed entries. If some entries are to be retained this should be done before purging.

Making the added entries permanent

Sometimes the entries added to the Database will be used frequently and should be added permanently. Fixing an entry in this manner will remove the brackets and will stop the entry from being re-added each time an Item or Drawing is opened.

The method used to make an entry permanent depends on the entry type.

Some entries such as material will display a small pushpin icon .

This icon is displayed as **grey** until an entry is displayed which has been added from an external source.

The Icon then changes to **green** . Pressing this icon will make the current entry permanent.

Other entries such as Connectors require the user to **right click** on the entry to make permanent and select "**Make Permanent**" from the displayed menu.