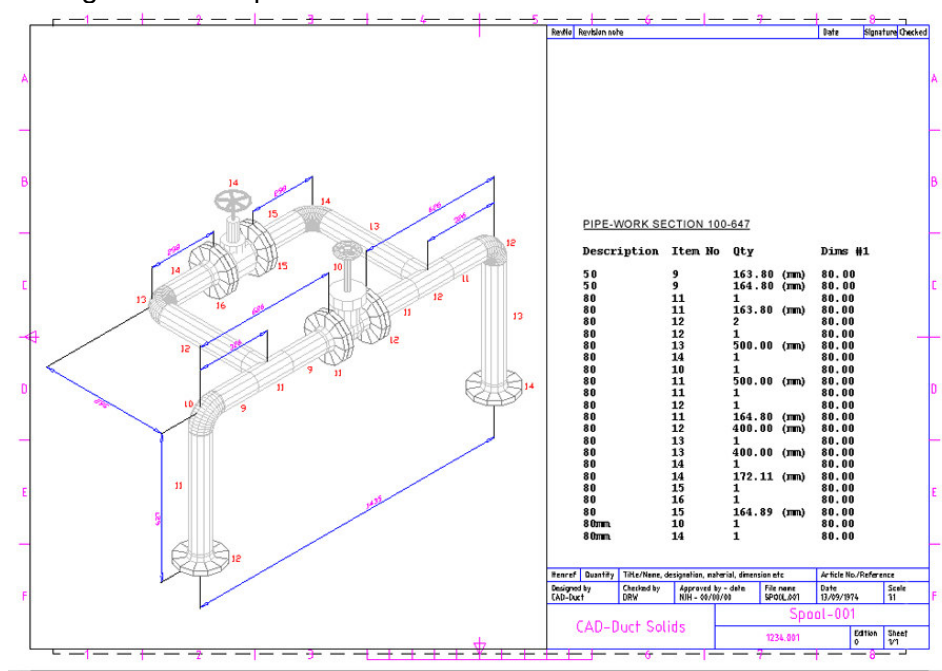


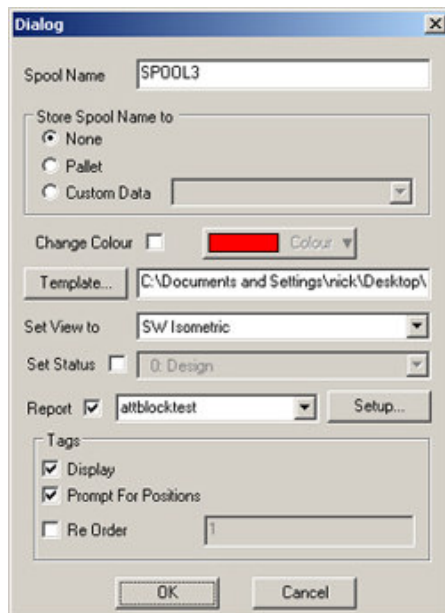
Spool Drawings

CAD-Duct allows the creation of **Spool drawings**, users are able to select a drawing template, import the required duct or pipework system in sections, and provide detailed item and dimension information including the option of adding an Item Report.



Procedure

1. **Open** the required CAD-Duct drawing.
2. Type the **SPOOLDWG** command to prompt the dialogue box.



3. **Enter** a Spool Name
4. The Store Spool Name allows the following:
 - **None** - Default
 - **Pallet** - Stores the Spool Name to the Items Pallet field
 - **Custom Data** - Stores the Spool Name to the Custom Data field Setup via the, **Edit Main Database > Custom Data** TAB
5. **Change Colour**: Changes the colour of the duct/pipe-work section
6. **Template**: Choose the Template for the Spool drawing
7. **Set View**: Sets the view for the Spool drawing viewport
8. **Set Status**: Sets the drawing status
9. **Report**: Select a previous report or select Setup to create a new one
10. **Tags**: Displays CAD-Duct Item number Tags
11. Click **OK**
12. **Select** the required duct/pipe-work section

CAD-Duct will now add the duct/pipe-work section to the Viewport of the Template. If the **Report Option** was selected, the user is prompted for the Report position.

Note - The position placement will be relative to the bottom left-hand corner of the Report.